



CamScan

Scanning Electron Microscopes



△ Ballistic Comparison Stage

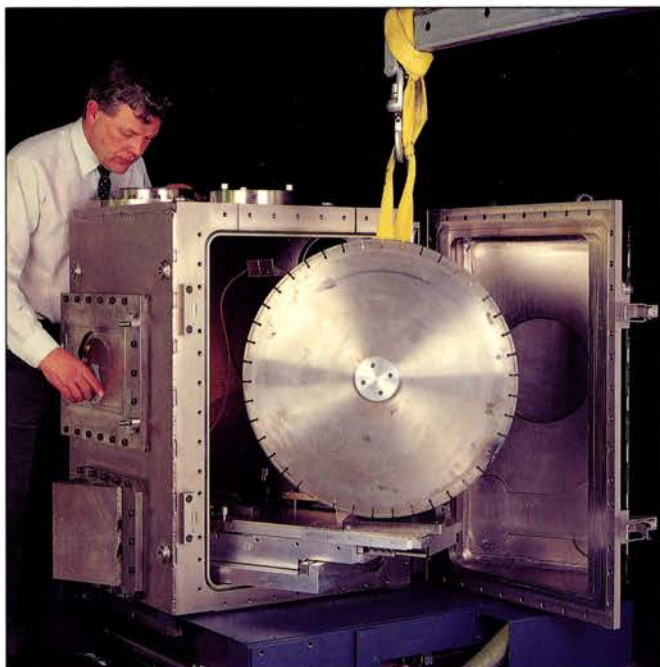
Operated in conjunction with the Digital Image Store this dual sample stage offers unique comparison features for Forensic Scientists.

Since its foundation in 1971 CamScan has earned the reputation as a world leader for innovation and quality in the design of Scanning Electron Microscopes.

The work of a dedicated team of specialists has resulted in a range of instruments based on sound fundamental design principles which harness the latest electronic and electron optical techniques with precision engineering, clean vacuum technology and good ergonomic design.

This broad base of scientific investment and technical excellence has provided a degree of continuity rarely found in advanced instrumentation and which brings real benefits to both new and existing customers whose opinions have established the strength and reputation of the company.

CamScan – Investing wisely for the future



△ Special Stage and Chamber for inspecting 24" (600mm) diameter cutting discs. Designed to fit on existing microscope without affecting its normal standard stage operation.

8" x 8" (200 x 200 mm)
Fully Eucentric Stage and Chamber.

Four axis motorised drive:

X, Y = 200mm

Tilt -15° to +90°

360° Rotation

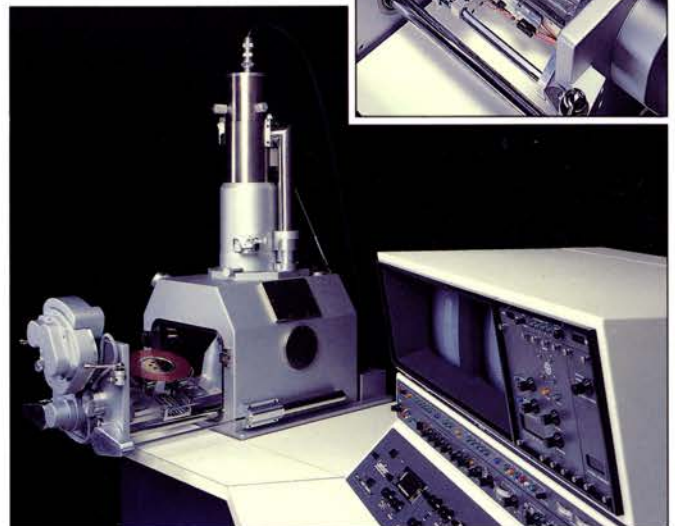
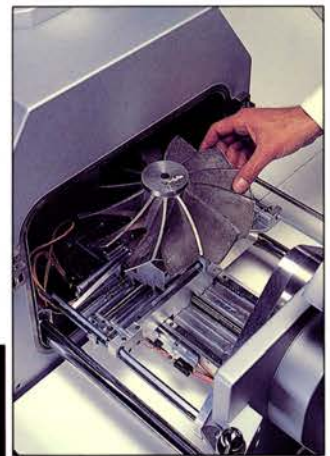
Suitable for large bulky samples

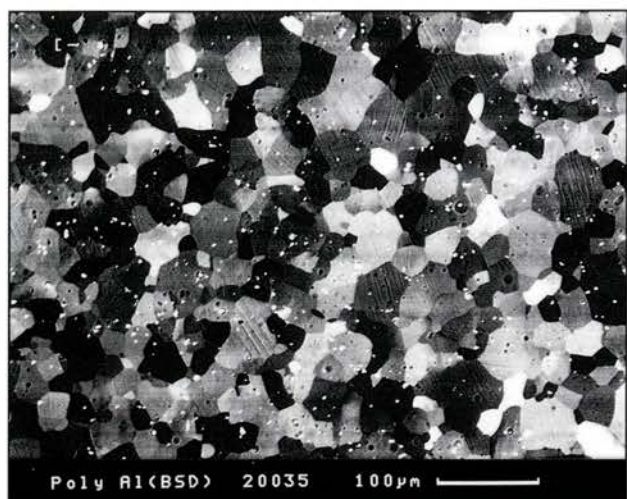
or I.C. wafers up to 200mm dia.

for which an airlock is available.

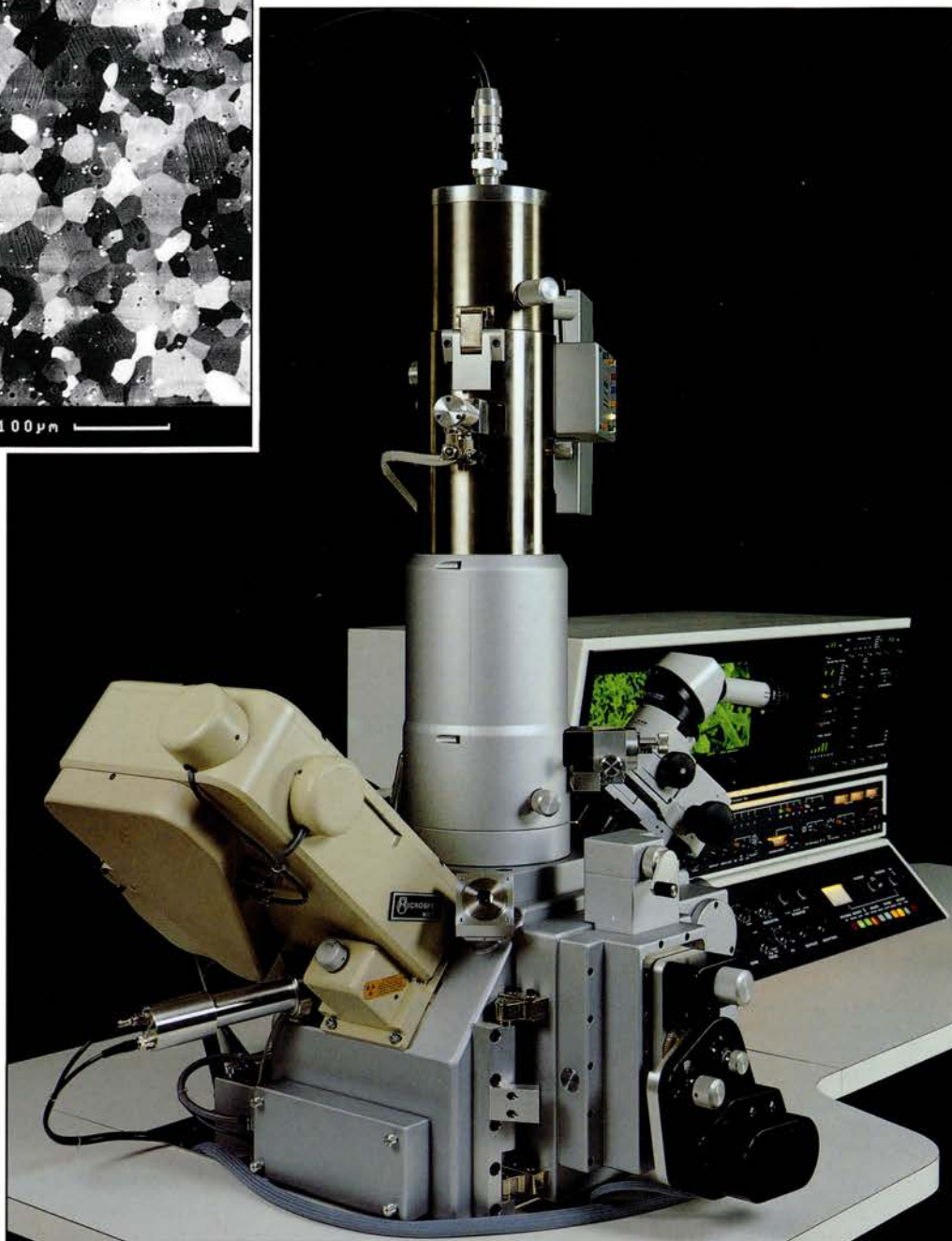
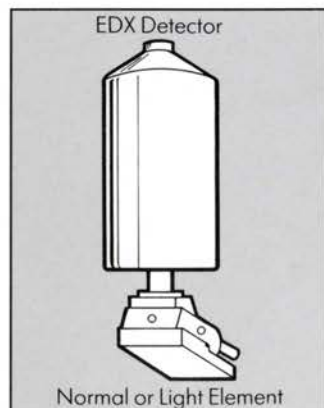
Can be configured with

either Series 2 or Series 4 control consoles.





- High Resolution Column
40Å (Tungsten): 30Å (LAB6)
- 40kV Electron Optics
Zoom Condenser
75° Focussing Lens
- Optimum 40° Take-off
available for both EDX and
WDX detectors.
- Variable Geometry Secondary
Detector.
- Automated Control of Electron
Beam and Stage.

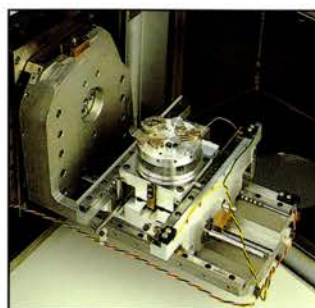


THE HEART OF THE CAMSCAN ANALYTICAL MICROSCOPE

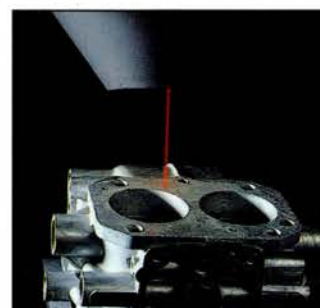
Ultra Stable Beam Optics and a Robust Precision Eucentric Stage, designed for round the clock operation, fulfil demanding requirements of stability and accuracy.

Complementary features are:

- **AUTOMATIC FARADAY CAGE:** - Instant Beam Current measurements during Quantitative Analysis.
- **LASER BEAM LOCATOR:** - Precise visual location of region being scanned by electron beam.
- **STEREO LIGHT MICROSCOPE:** - With Zoom operation provides a real correlation between Electron and Optical Images.
- **LARGE SAMPLE AIRLOCK:** - Fast, clean, sample exchange for enhanced analytical stability.



Large Movement
(150x100mm) Eucentric Stage
(fitted to 40° chamber)



Laser Beam Locator

■ QUALITY OF DESIGN

Through careful attention to ergonomic design, system control and a fundamental appreciation of instrument applications, CamScan have ensured that all operational requirements of the microscopist are simply and easily achieved.

■ QUALITY OF FUNCTION

All instruments are well suited to the fast operation and heavy work loads of a multiuser environment yet they preserve the high level of sophistication demanded by the professional microscopist.

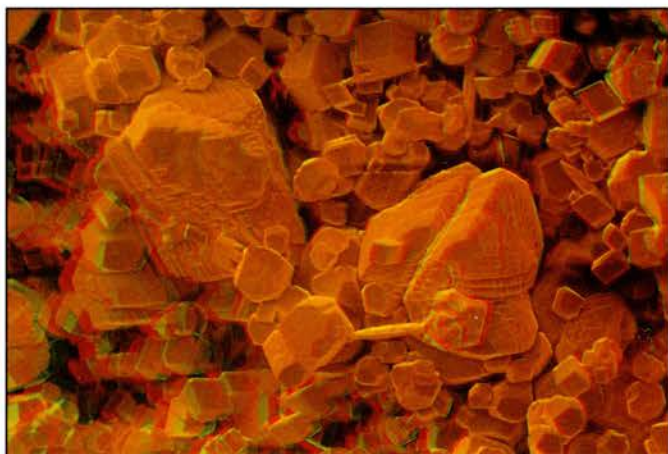
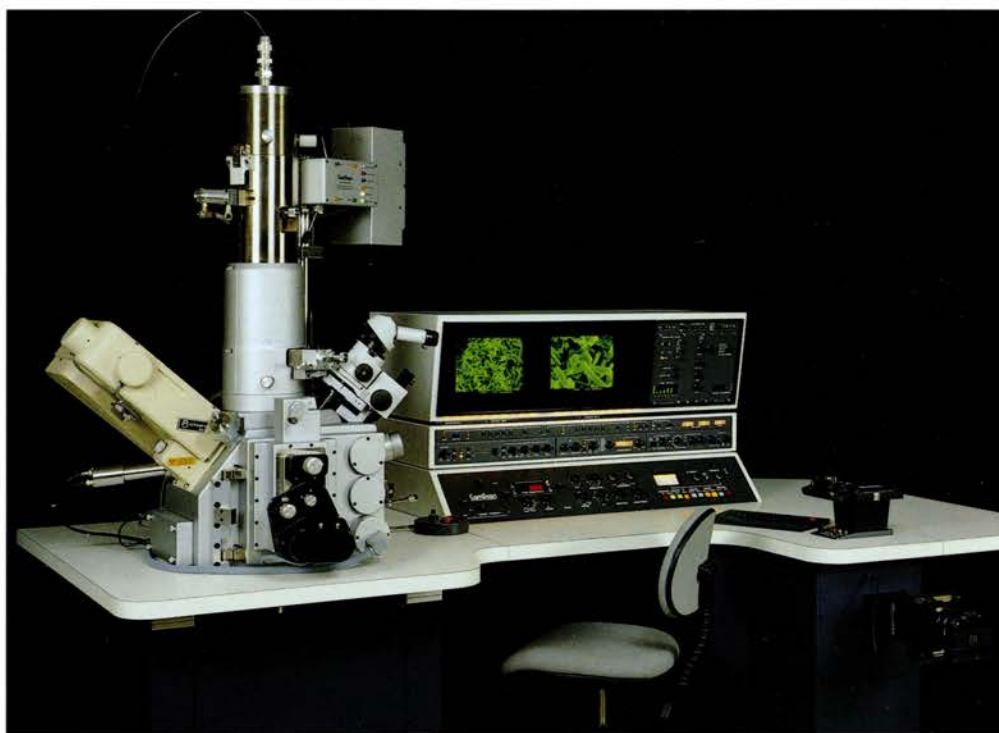
■ QUALITY OF OPERATION

Consistent levels of high performance and reliability are demanded and achieved.

These are the guiding principles that have resulted in the deep level of commitment to Quality and Reliability reflected in all our products.

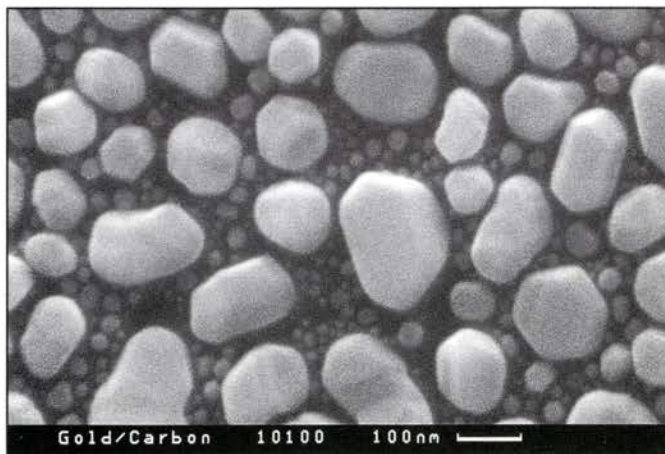
CAMSCAN SERIES 4 ▷

- The Series 4 microscope featured here is fully equipped for microanalytical operation.
- The Chamber, designed for 40° X-Ray take-off angle, is fitted with a fully Focussing Crystal Spectrometer (WDX) and interfacing for the EDX detector.
- The Stage Drive is designed for simple or fully automated Stage Control providing very accurate repeatability and excellent analytical performance
- The electronics incorporate the latest digital imaging techniques.
- The dual photographic system provides simultaneous recording on Polaroid and roll film – the 35mm camera is fully automatic.



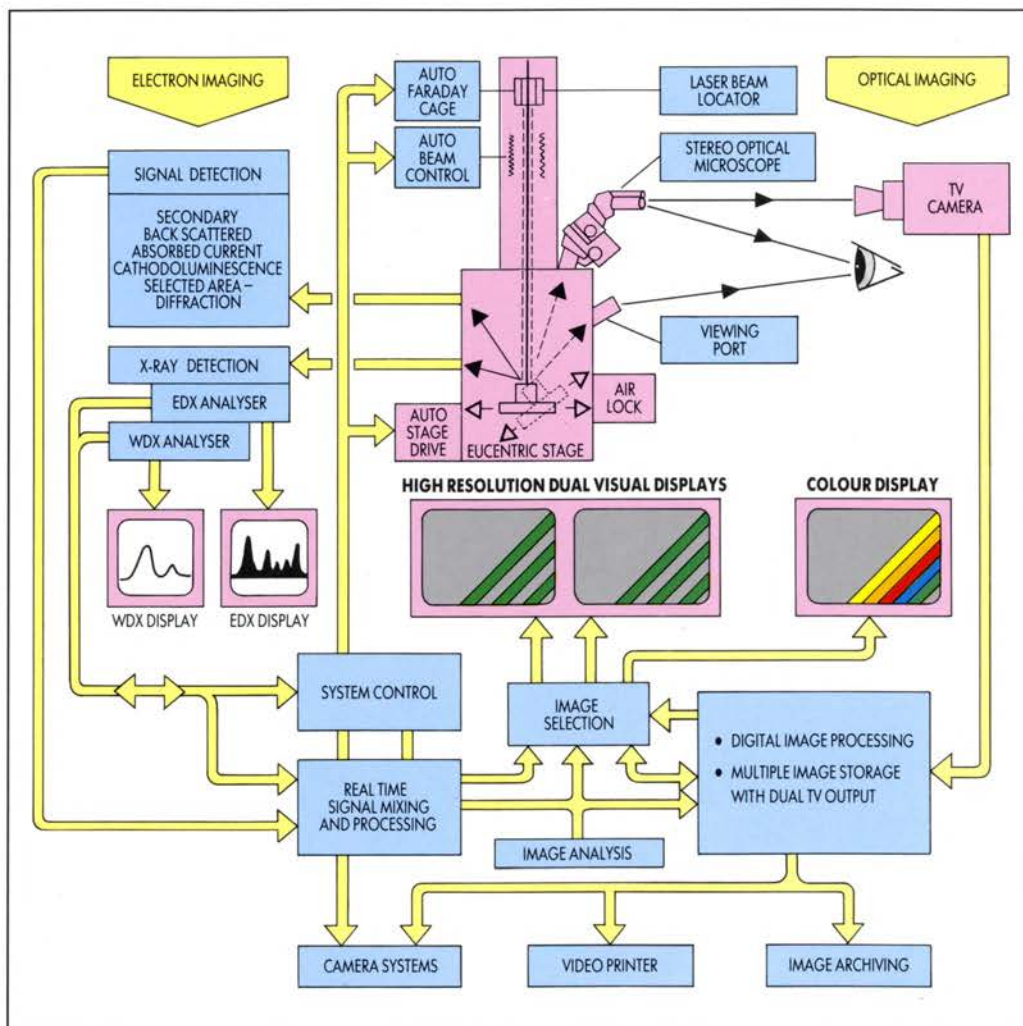
RAPID STEREO IMAGING

The combination of fully eucentric stage and Dual TV output from the Digital Image Store enables excellent Stereo Images to be produced in seconds.



HIGH RESOLUTION RESULTS

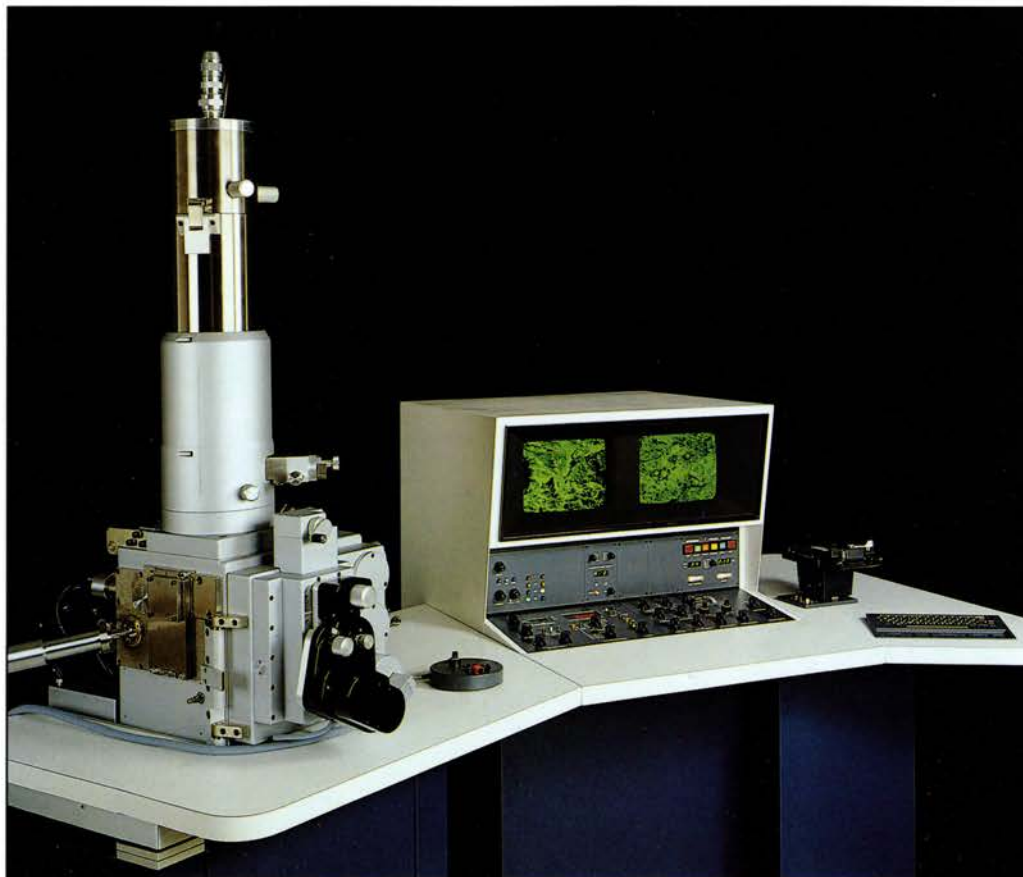
The unique Electron Optics design ensures that high resolution images can be achieved with ease at close working distance and at the optimum analytical position.



THE COMPLETE INTERACTIVE ELECTRON/OPTICAL IMAGING AND X-RAY ANALYSIS SYSTEM.

The diagram illustrates the way in which Optical Images, Electron Beam derived Images and Analytical Information are combined to best advantage.

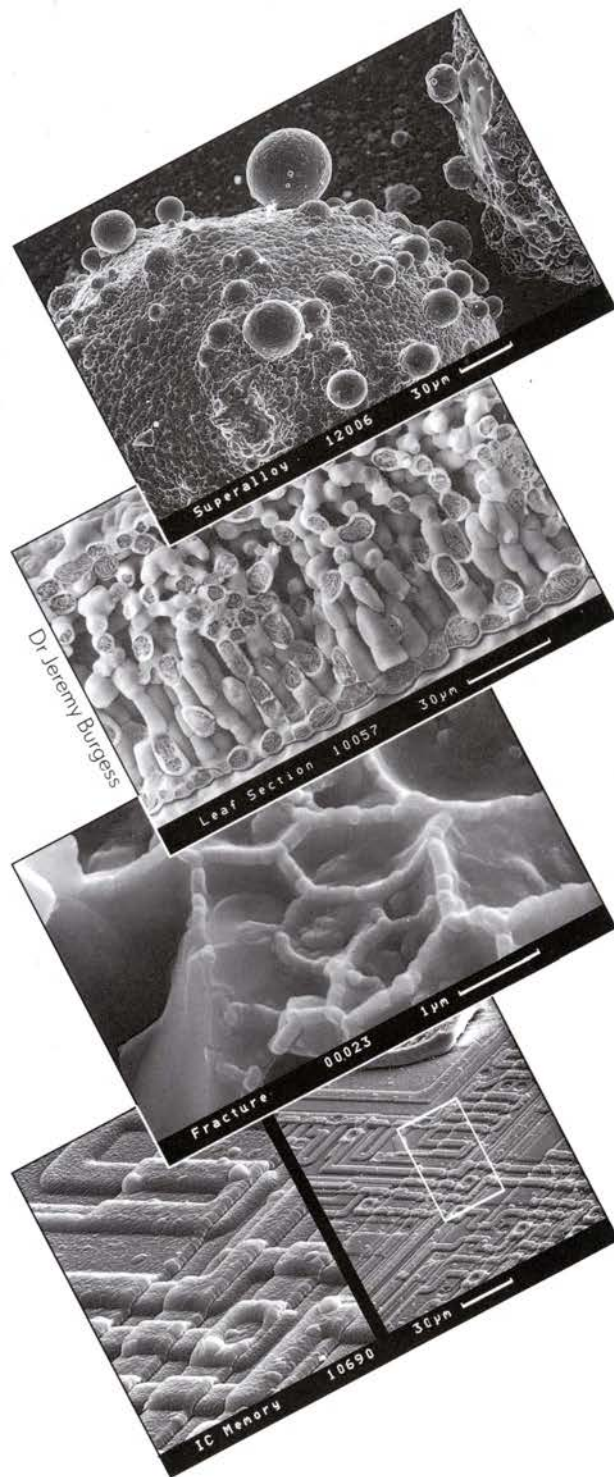
A complete choice of image presentation is offered enabling high definition real time, digitally processed and stored images or any combination of these to be displayed or recorded.



◁ CAMSCAN SERIES 2

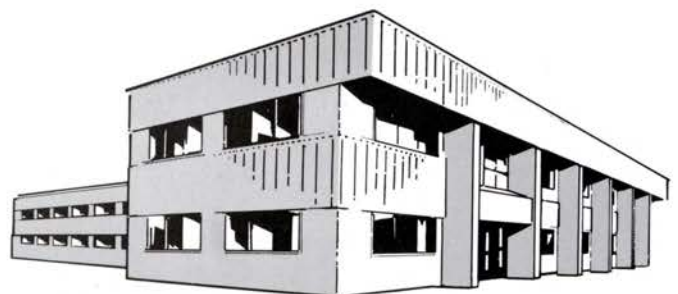
Series 2 instruments offer identical electron optics and analytical features to the Series 4 but with a more compact modular display console.

The Series 2 illustrated includes Digital Image Storage and is combined here with the large multiported research chamber which can be fitted with WDX and EDX spectrometers (30° t.o.a.) offering excellent X-Ray geometry with the eucentric 50 × 100mm motorised stage.



The purpose built factory at Bar Hill, Cambridge, where the complete CamScan range of Scanning Electron Microscopes are designed and manufactured.

CamScan Distributor



CamScan, Saxon Way, Bar Hill, Cambridge CB3 8SL
Tel: (0954) 780926 Telex: 81126 CBSCAN Fax (0954) 789829